



Appendix C: Community Outreach Materials

Page Intentionally Left Blank

AFFIDAVIT OF PUBLICATION

(2015.5 C.C.P.)

STATE OF CALIFORNIA

County of Los Angeles

} SS

The space above is for filing stamp only

**NOTICE OF INTENT TO PREPARE 2018 ANTELOPE VALLEY INTEGRATED REGIONAL WATER MANAGEMENT PLAN
CNS-3280827**

NOTICE OF INTENT TO PREPARE 2018 ANTELOPE VALLEY INTEGRATED REGIONAL WATER MANAGEMENT PLAN

The Antelope Valley Integrated Regional Water Management (IRWM) group is preparing an update to the 2013 Antelope Valley IRWM Plan to comply with State integrated planning requirements. The update is designed to improve collaboration in water resources management among potable water wholesalers and retailers, wastewater agencies, stormwater managers, watershed groups, private businesses, agriculture representatives and non-profit stakeholders.

For additional information, please contact Evelyn Ballesteros at eballesteros@dpw.lacounty.gov or visit avwaterplan.org

This public notice is being published in accordance with Section 10543 of the California Water Code.
8/20, 8/27/19
CNS-3280827#

I am a citizen of the United States and a resident of the County aforesaid; I am over the age of eighteen years, and not a party to or interested in the above entitled matter. I am the principal clerk of the printer of the Antelope Valley Press, a newspaper of general circulation, printed and published daily in the city of Palmdale, County of Los Angeles, and which newspaper has been adjudged a newspaper of general circulation by the Superior Court of the County of Los Angeles, State of California, under date of October 24, 1931, Case Number 328601; Modified Case Number 657770 April 11, 1956; also operating as the Ledger-Gazette, adjudicated a legal newspaper June 15, 1927, by Superior Court decree No. 224545; also operating as the Desert Mailer News, formerly known as the South Antelope Valley Foothill News, adjudicated a newspaper of general circulation by the Superior Court of the County of Los Angeles, State of California on May 29, 1967, Case Number NOC564 and adjudicated a newspaper of general circulation for the City of Lancaster, State of California on January 26, 1990, Case Number NOC10714, Modified October 22, 1990; that the notice, of which the annexed is a printed copy (set in type not smaller than nonpareil), has been published in each regular and entire issue of said newspaper including the e-edition thereof on the following dates, to-wit:

August 20, 27, 2019

I certify (or declare) under penalty of perjury that the foregoing is true and correct.

Sheri Arnold

electronically signed

Dated: August 27, 2019

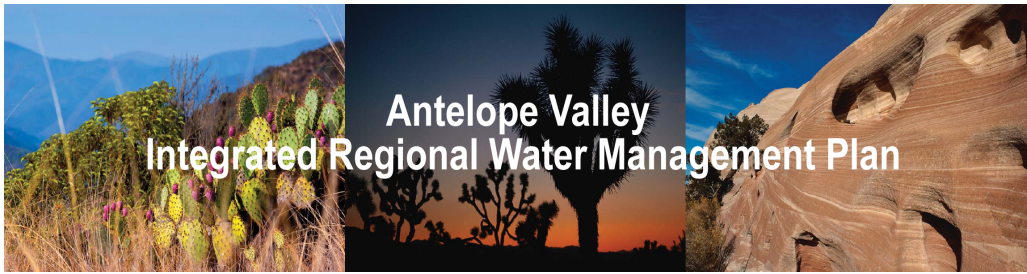
Executed at Palmdale, California



Valley Press

37404 SIERRA HWY., PALMDALE CA 93550
Telephone (661)267-4112/Fax (661)947-4870

Page Intentionally Left Blank



Antelope Valley Integrated Regional Water Management Plan

[Home](#) [Projects](#) [Grants](#) [Stakeholders](#) [Governance](#) [Plan](#) [Outreach](#) [Library](#) [F.A.Q.](#) [Contact Us](#)

STAKEHOLDER MEETINGS

November 20, 2013
[AVIRWM] IRWM
Stakeholder Meeting

November 20, 2013
[AVIRWM] Salt and Nutrient
Management Plan
Stakeholder Meeting


PAST EVENTS

GET INVOLVED

Subscribe or Login to
manage IRWMP event
notifications.

[Submit Your Projects](#)

[Press Room](#)

 CLEAR CHANNEL
Interview with LACWWD's
Adam Ariki

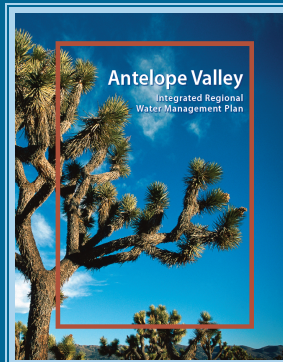
**California's
Water Crisis:**

A Public
Education
Program [CalWaterCrisis.org](#)

Antelope Valley Integrated Regional Water Management Plan

The Antelope Valley Integrated Regional Water Management Plan (IRWMP), A.K.A. The AV Water Plan, is a multi-county collaboration effort developed to address regional concerns about water supply reliability, water quality, flood protection, environmental resources and land use management in the Antelope Valley.

ANNOUNCEMENT:



The Antelope Valley Water Plan is now COMPLETE and has been posted for review.

You can read the document by clicking on the [icon to the left](#).

SPOTLIGHT

NEW! Prop 84,
Round 2
Implementation
Grant Proposal –
BCSD Arsenic
Management
Feasibility Study
(PDF, 5MB)

Proposition 1E,
Round 2 Stormwater
Flood Management
Grant Application
Littlerock Reservoir
Sediment Removal
Project
(PDF, 58MB)

Salt/Nutrient
Management Plan -
Scope of Work
(PDF, 24 KB)

[SEE WHAT OUR STAKEHOLDERS HAVE TO SAY!](#)

Page Intentionally Left Blank

Vanessa De Anda

From: Evelyn Ballesteros <eballesteros@dpw.lacounty.gov>
Sent: Thursday, September 19, 2019 4:13 PM
Subject: Antelope Valley IRWM-Stakeholder Meeting (October 2, 2019)
Attachments: Meeting Notes_2019-08-07 FINAL.pdf; AVIRWM agenda 2019-10-02.doc

Antelope Valley IRWM Stakeholders and interested others-

Our next Antelope Valley IRWM stakeholder meeting is scheduled for Wednesday, October 2nd, 2019 from 9:30 am to 11:00 am at the City of Palmdale.

The meeting will be held at the City complex in the **Lilac Room** at the **Chimbole Cultural Center** located at 38350 Sierra Hwy, Palmdale CA 93550. An agenda for the upcoming meeting has been attached as well as notes from our last stakeholder meeting.

If you have any questions, please contact me via email.

Evelyn Ballesteros
Associate Civil Engineer
Los Angeles County Public Works
eballesteros@dpw.lacounty.gov

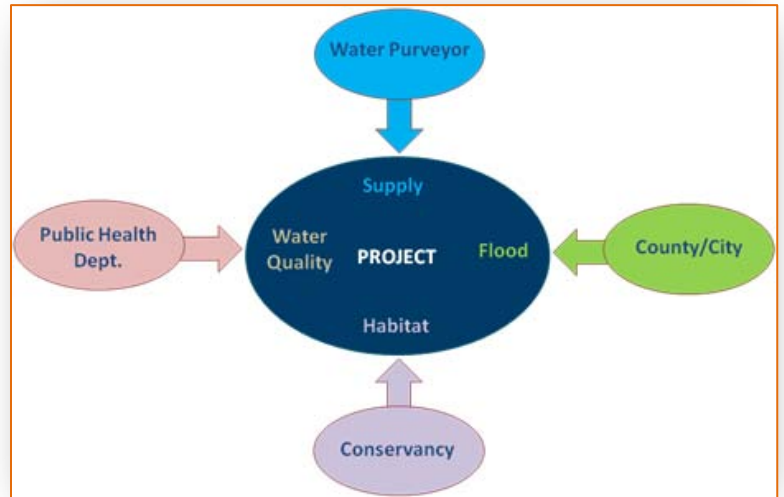
P.S. To ensure you are subscribed to the Antelope Valley IRWM Stakeholder Group for meeting notices and updates, please review your Public Works eNotify Account here → [DPW eNotify](#)
To unsubscribe from this mailing list, please reply to this email.

Antelope Valley Integrated Regional Water Management

What is integrated regional water management?

Integrated Regional Water Management (IRWM) is a collaborative effort to manage all aspects of water resources in a region. IRWM crosses jurisdictional, watershed, and political boundaries; involves multiple agencies, stakeholders, individuals, and groups; and attempts to address the issues and differing perspectives of all the entities involved using mutually beneficial solutions.

This State program encourages local agencies to work cooperatively to manage local and imported water supplies to improve quality, quantity, and reliability.

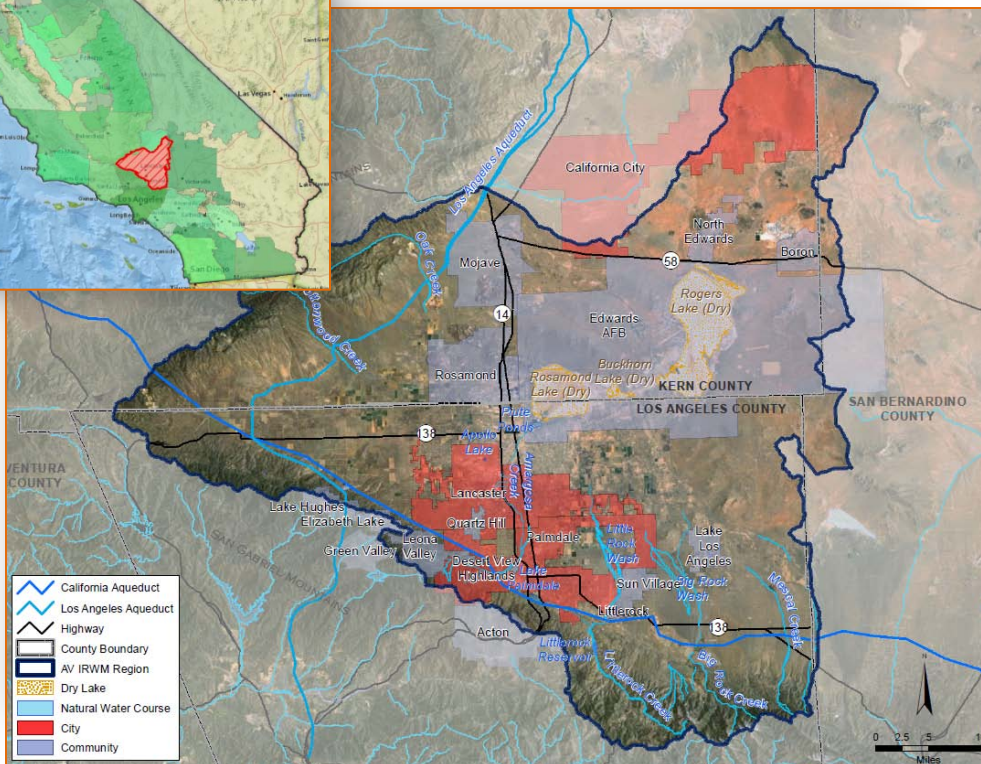
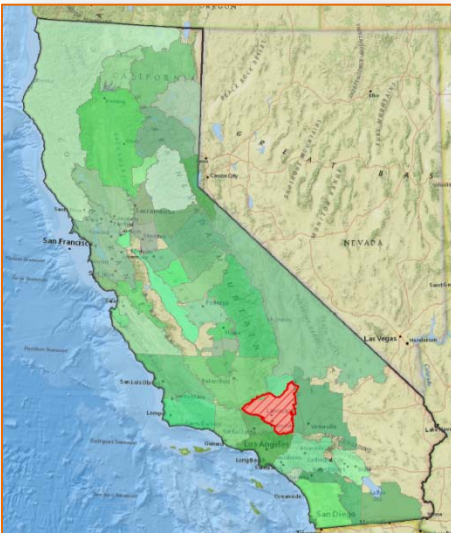


The IRWM Program organizes the State into Regions based on shared challenges & responsibilities

The Antelope Valley is one of 48 regions in the State of California. Regions are defined as contiguous geographic areas encompassing the service areas of multiple local agencies, and are defined to maximize the opportunities to

integrate water management activities. Each region is self defined, and is approved by the California Department of Water Resources. Approved Regions are eligible to apply for grant funding.

The Antelope Valley Region encompasses approximately 2,400 sq miles in northern Los Angeles County, southern Kern County, and western San Bernardino County.



Numerous Antelope Valley stakeholders have been engaged in the Program since 2006

Leaders and agencies in the Antelope Valley joined together to form a Regional Water Management Group (RWMG):



Other stakeholders also participate in the Antelope Valley IRWM process:

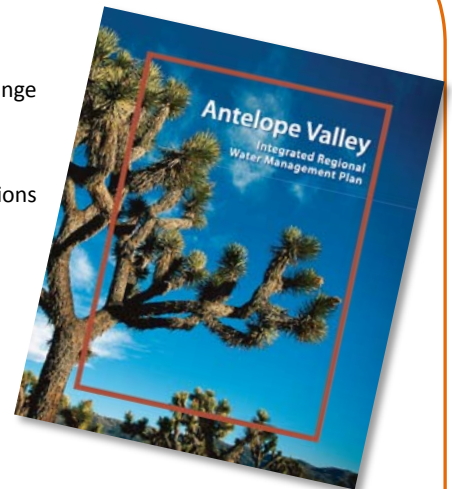
- Antelope Valley Board of Trade
- Antelope Valley Conservancy
- Antelope Valley Resource Conserv. District
- Antelope Valley United Water Purveyors
- Building Industry Association
- California Dept. of Fish & Game
- California Dept. of Public Health
- California Dept. of Water Resources
- CA State Water Resources Control Board
- California State Parks
- City of Boron
- City of California City
- Edwards Air Force Base
- Kern County Board of Supervisors, Dist. 2
- Kern County Farm Bureau
- Kern County Planning Department
- Lahontan Reg. Water Qual. Control Board
- Lake Los Angeles Town Council
- Leona Valley Town Council
- LA County Board of Supervisors
- LA County Dept. of Public Works
- LA County Dept. of Regional Planning
- LA County Farm Bureau
- Mojave Desert Mountain Resource Conservation and Development Council
- National Education Association
- National Resources Conservation Service
- Roosevelt Town Council
- Sierra Club
- Sundale Mutual
- U.S. Department of Agriculture
- Westside Park
- White Fence Farms

Stakeholders have collaborated to develop water management objectives, to develop projects, and to write an IRWM Plan that is periodically updated

The Region's objectives help to manage current and future resources.

- Water Supply
- Water Quality
- Flood Management
- Environmental Resources Management
- Land Use Planning/ Management
- Climate Change

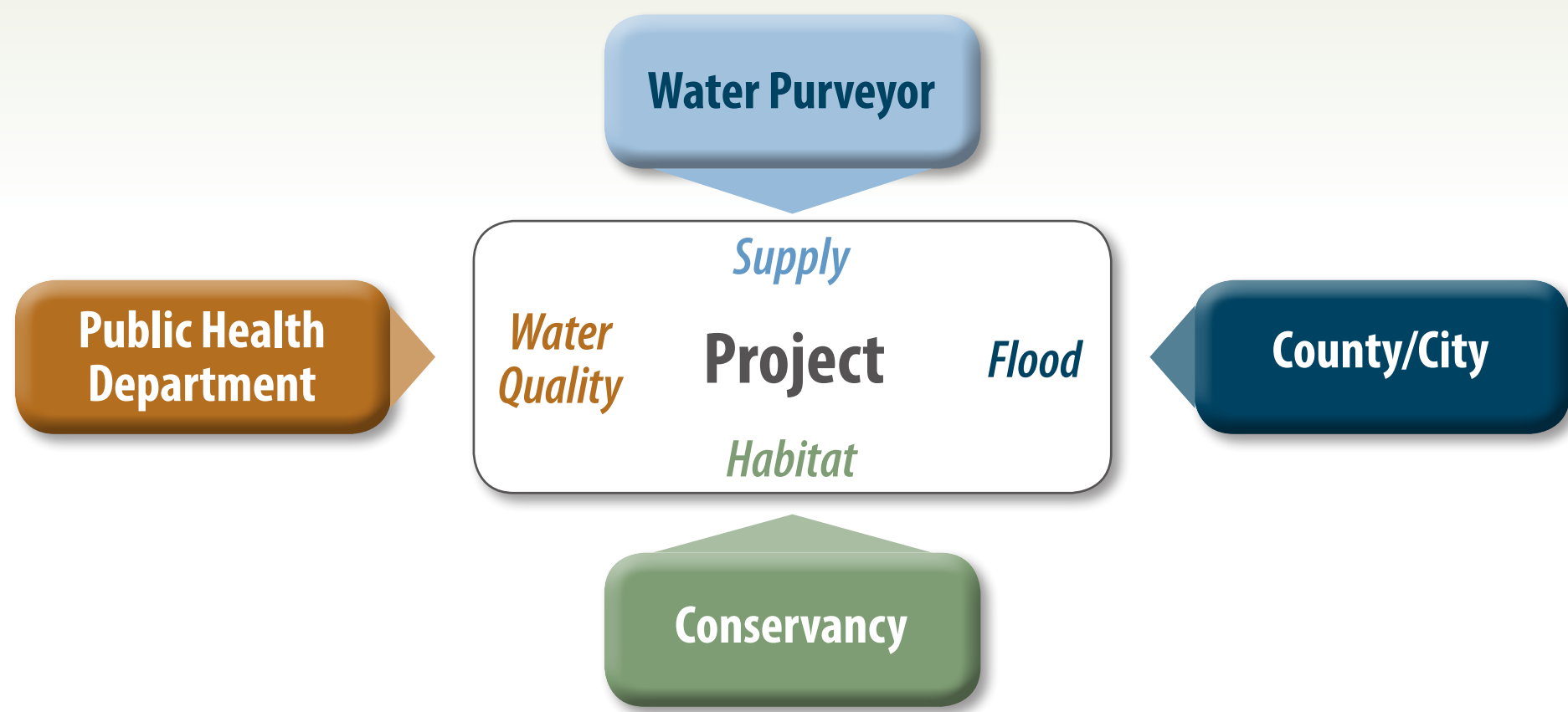
- Provide reliable water supply and adapt to climate change
- Establish a supply contingency plan
- Stabilize groundwater levels
- Meet regulatory requirements and customer expectations
- Protect and maintain aquifers
- Protect streams and recharge areas
- Maximize beneficial use of recycled water
- Reduce negative impacts of stormwater, urban runoff, and nuisance water
- Preserve open space and natural habitats, and enhance water resources and species in the Region
- Maintain agricultural land use
- Meet growing demand for recreational space
- Improve integrated land use planning
- Mitigate against climate change



BECOME AN IRWM STAKEHOLDER!
 Please visit www.avwaterplan.org or contact the Los Angeles County Department of Public Works at (626) 300-3353 for stakeholder meeting information.

Antelope Valley Integrated Regional Water Management (IRWM)

The IRWM Program was developed to encourage collaboration on water issues



Integrated Regional Water Management (IRWM) is a collaborative effort to manage all aspects of water resources in a region. IRWM crosses jurisdictional, watershed, and political boundaries; involves multiple agencies, stakeholders, individuals, and groups; and attempts to address the issues and differing perspectives of all the entities involved using mutually beneficial solutions.

This State program encourages local agencies to work cooperatively to manage local and imported water supplies to improve quality, quantity, and reliability.

The State is organized into IRWM Regions based on shared challenges & responsibilities



The Antelope Valley Region is one of 48 regions in the State of California. Regions are defined as contiguous geographic areas encompassing the service areas of multiple local agencies, and are defined to maximize the opportunities to integrate water management activities. Each region is self-defined, and is then approved by the California Department of Water Resources. Approved Regions are eligible to apply for grant funding.

Numerous Antelope Valley stakeholders have been engaged in the Program since 2006

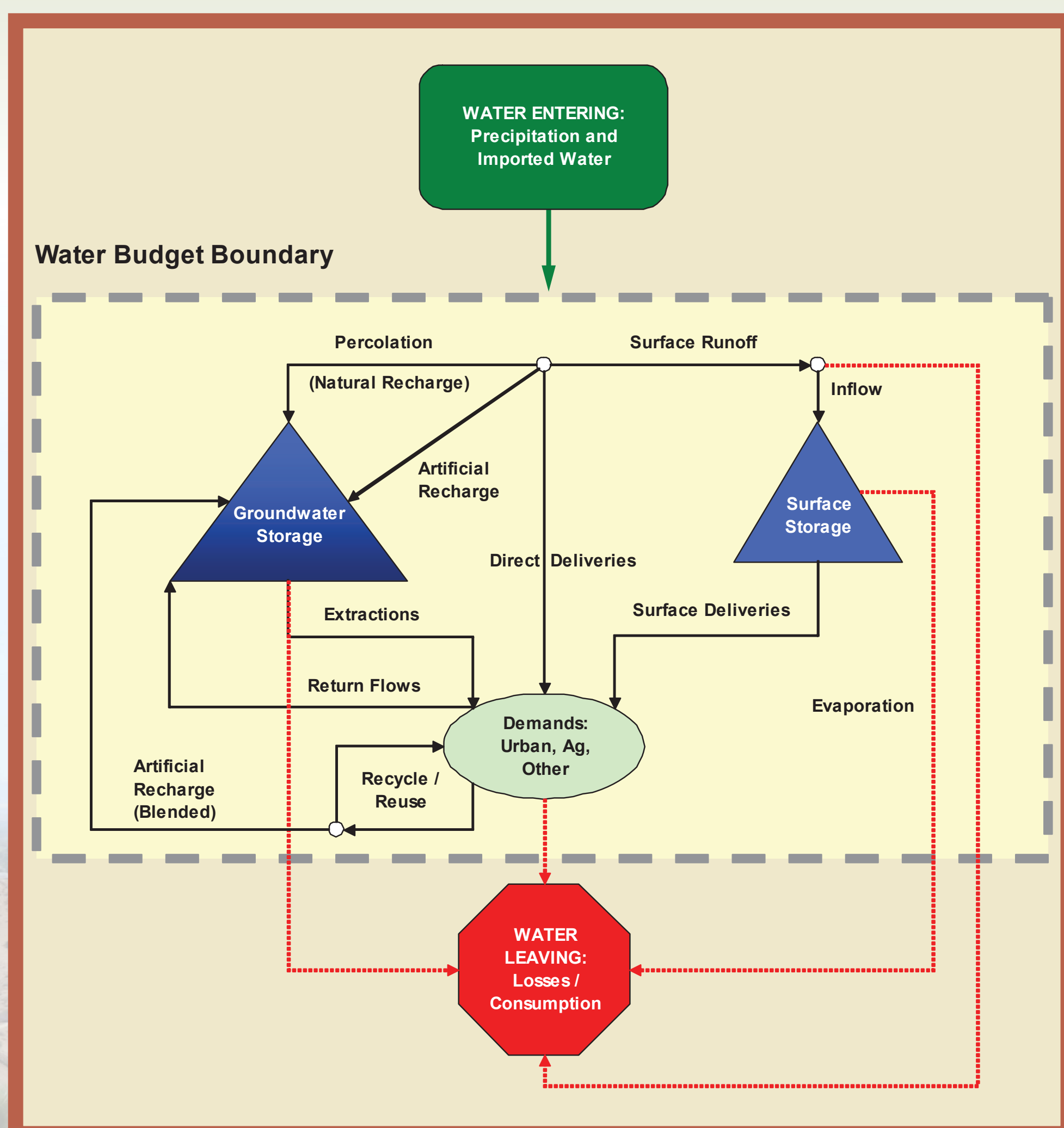
Regional Water Management Group



Other Stakeholders

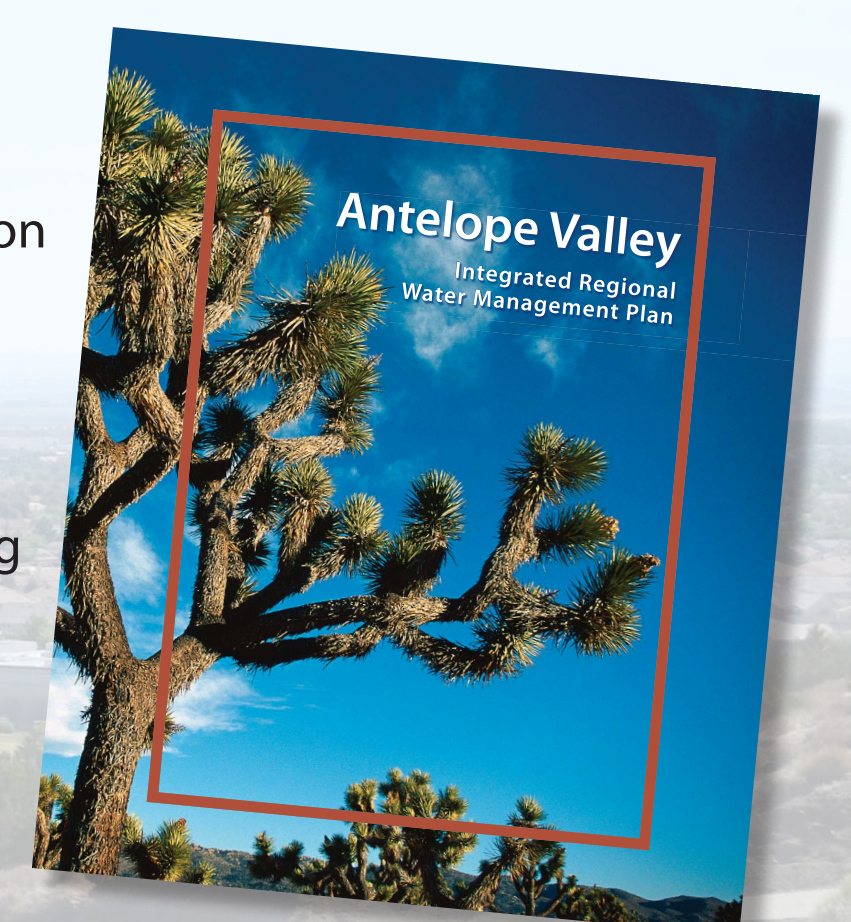
- Antelope Valley Board of Trade
- Antelope Valley Conservancy
- Antelope Valley Resource Conservation District
- Antelope Valley United Water Purveyors
- Building Industry Association - Antelope Valley Chapter
- California Dept. of Fish & Game
- California Dept. of Public Health Resources
- California State Water Resources Control Board
- California State Parks
- City of Boron
- City of California City
- Edwards Air Force Base
- Kern County Board of Supervisors, District 2
- Kern County Farm Bureau
- Kern County Planning Dept.
- Lahontan Regional Water Quality Control Board
- Lake Los Angeles Town Council Association
- Lake Los Angeles Park
- Leona Valley Town Council
- Los Angeles Co. Board of Supervisors Office, District 5
- Los Angeles Co. Dept. of Public Works, Watershed Management Division
- Los Angeles Co. Dept. of Regional Planning
- Los Angeles Co. Farm Bureau
- Mojave Desert Mountain Resource Conservation and Development Council
- Mutual Water Companies
- National Education Association, Antelope Valley
- National Resources Conservation Service
- Roosevelt Town Council
- Sierra Club
- Sundale Mutual Water
- Town Councils
- Tybrin Corporation at Edwards Air Force Base
- U.S. Department of Agriculture
- Westside Park Mutual Water Company
- White Fence Farms Mutual Water Company

The Region has a complex water balance

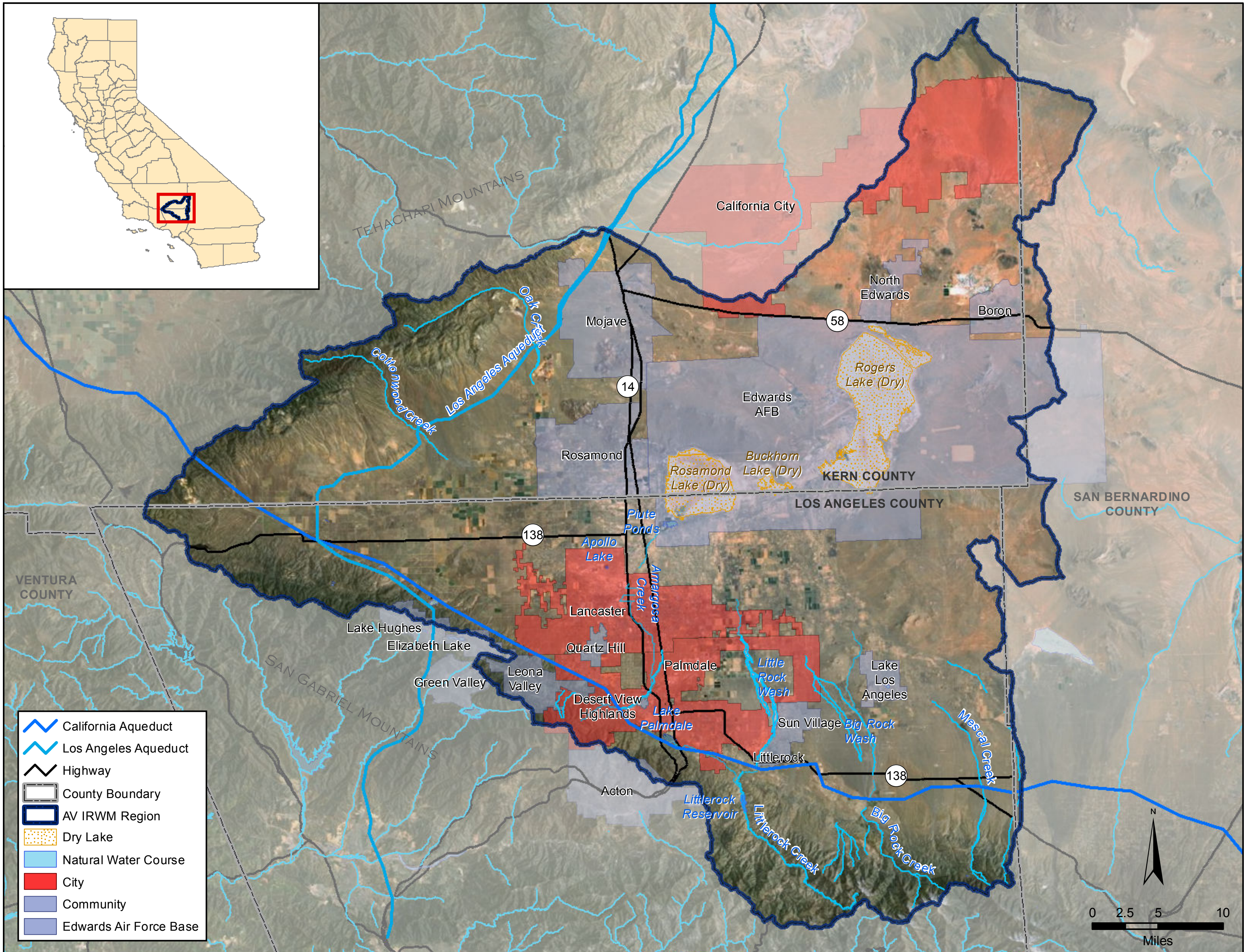


Stakeholders have collaborated to develop water management objectives and to write an IRWM Plan that is periodically updated

- Water Supply**
 - Provide reliable water supply and adapt to climate change
 - Establish a supply contingency plan
 - Stabilize groundwater levels
- Water Quality**
 - Meet regulatory requirements and customer expectations
 - Protect and maintain aquifers
 - Protect streams and recharge areas
 - Maximize beneficial use of recycled water
- Flood Management**
 - Reduce negative impacts of stormwater, urban runoff, and nuisance water
 - Optimize the balance between existing beneficial uses of stormwater and capturing stormwater for new uses
- Environmental Resources Management**
 - Preserve open space and natural habitats, and enhance water resources and species in the Region
- Land Use Planning/Management**
 - Maintain agricultural land use
 - Meet growing demand for recreational space
 - Improve integrated land use planning to support water management
- Climate Change**
 - Mitigate against climate change



The Antelope Valley IRWM Region is made up of many unique cities and communities.



The Antelope Valley communities are working together through IRWM to implement water projects for the benefit of all.

